



TLK 110 AND WAVE PTX LONE WORKER FEATURE

The TLK 110 and WAVE PTX Lone Worker feature make it possible for organizations to enhance the safety and well-being of their employees working alone, particularly those in dangerous environments. When the Lone Worker feature is enabled, the TLK 110 will automatically start a response timer and, if no user activity is detected before the timer expires, initiate an emergency call to the right personnel to provide assistance.

AUTOMATIC

Once Lone Worker is enabled on the TLK 110, a user requiring assistance does not have to take any action for an emergency call to be initiated.

RELIABLE

The TLK 110's Lone Worker feature provides a warning tone and countdown, reminding users to press any key in order to avoid a "false alarm".

CUSTOMIZABLE

Lone Worker can be activated on a per user basis, and response timers, reminder timers and emergency contacts can be configured for each user.

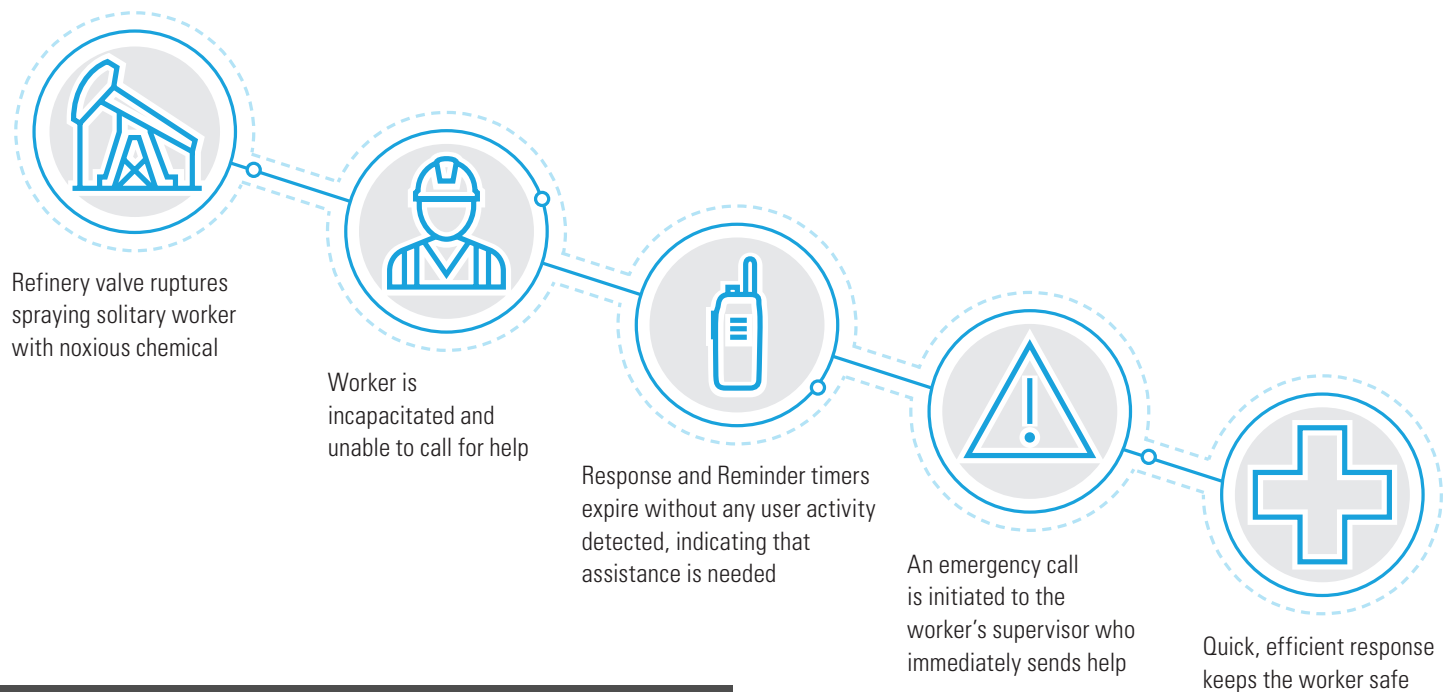
REASSURING

Solitary workers are reassured that help will be provided even if they are unable to request it, and organizations have an assurance that those workers are safe.



When the Lone Worker feature is enabled, the TLK 110 device uses a “Response Timer” to determine if a user needs assistance. If user activity is detected, i.e. any button press, before the response timer expires, the timer is reset. If the response timer expires, a warning tone is issued and a “reminder” timer started. Should the reminder timer expire, an emergency call is initiated on behalf of the user.

USE CASE – LONE OIL & GAS WORKER



With the TLK 110 and Lone Worker feature, no worker, no matter how distant or isolated, is truly alone; if something happens to them, help is alerted and accessible.

